

MEET 5th GENERATION



DAY
NIGHT
THERMAL

Q1 / 2025



THE FUTURE
OF OPTICS

www.atneu.com

X-Sight 5 / 5 LRF Series ULTRA HD 4K+ SMART DAY & NIGHT VISION RIFLE SCOPE	page 4
X-Celsior Series NIGHT / DAY HUNTING RIFLE SCOPE	page 6
Mars 5 XD / 5 XD LRF Series 1280X1024 SMART HD THERMAL RIFLE SCOPE	page 8
Mars 5 / 5 LRF Series SMART HD THERMAL RIFLE SCOPE	page 10
Mars LTV+ Series ULTRA LIGHT THERMAL RIFLE SCOPE	page 12
TICO LTV Series THERMAL MONOCULAR / CLIP-ON	page 14
Blazehunter Series THERMAL MONOCULAR	page 16
IR850 Pro LONG RANGE INFRA-RED ILLUMINATOR	page 18
IR850 Supernova EXTREME RANGE INFRA-RED ILLUMINATOR	page 18
IR940 LONG RANGE INFRA-RED ILLUMINATOR	page 18
Extended Life Battery Kit 10,000 mAh BATTERY PACK	page 18
X-Sound HEARING PROTECTOR	page 18
Power Weapon Kit 20,000 mAh BATTERY PACK	page 18
High Profile Quick Detach Heavy Duty Mount	page 19
Low Profile Quick Detach Heavy Duty Mount	page 19
Quick Detach Mount	page 19
Tactical Carry Case	page 19
Deluxe Binoculars Bag	page 19
Thermal Targets	page 19
X-TRAC 5 TACTICAL REMOTE ACCESS CONTROL SYSTEM	page 19





ULTRA HD OPTICS

Experience ATN's Ultra HD Optics like never before! Our new 4K "True Color" Sensor is capable of capturing crisp clear images

at the furthest ranges with increased daytime color resolution (4 million colors). With 24,000 shades of grey, you'll also get incredibly smooth nighttime gradations from darkness to light.

All 5th Gen Optics have been redesigned to meet strict specifications to match our 4K sensor performance. The new Quad Core Processor that drives our core allows for faster response, higher

FPS rate, better streaming, and the use of a multitude of new image processing techniques.

The next several pages will help familiarize you with just some of the amazing features the new Smart HD and Ultra HD Optics have to offer.

THE FUTURE OF OPTICS IS HERE!



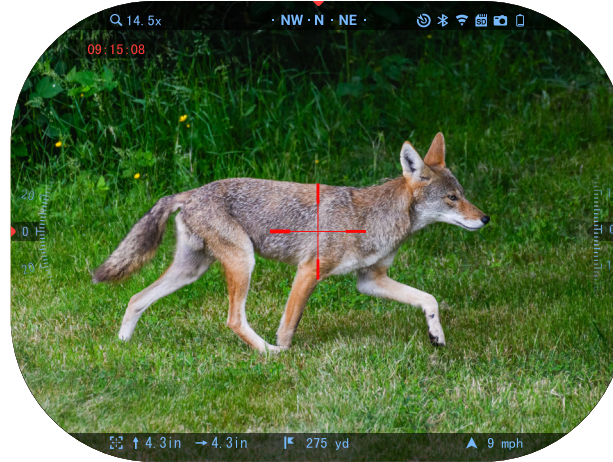
4K+
SENSOR

**SMART HD
OPTICS**

**5th
GENERATION**

X-SIGHT 5 / 5 LRF SERIES

ULTRA HD 4K+ SMART DAY & NIGHT VISION RIFLE SCOPE



*scope view

4K ULTRA HD 4K SENSOR

Experience true-to-life visuals day and night with the new superior 4K sensor.

BUILT-IN LASER RANGEFINDER (OPTIONAL)

Achieve precise shooting and never miss a target with this advanced feature.

ADVANCED BALLISTIC CALCULATOR

Seamlessly integrate shot accuracy by accounting for environmental variables directly within the scope.

4K VIDEO 4K VIDEO RECORDING

Record and share your experiences in real 4K quality with friends and family.

240 fps SLOW MOTION

Capture crucial moments with stunning clarity at 240 frames per second.

CUSTOM RETICLE EDITOR

Unleash creativity with ATN to design and share unique reticles.



SPECIFICATIONS

Item	X-Sight 5 3-15x	X-Sight 5 5-25x	X-Sight 5 LRF 3-15x	X-Sight 5 LRF 5-25x
Laser Rangefinder	No		Yes	
Sensor	ATN 4K+ 4056x3040 30/60/120 FPS			
Magnification	3-15x	5-25x	3-15x	5-25x
Field of view	9°	6.3°	9°	6.3°
Field of view	15.7 m / 100 m	11 m / 100 m	15.7 m / 100 m	11 m / 100 m
Core	ATN Gen V Quad Core			
Micro Display	1280x960			
Eye relief	90 mm			
Video Record Resolution	Up to 4K UHD 30/60/120 fps			
Ballistic Calculator	Yes			
WiFi (Streaming, Gallery, & Controls)	iOS, Android			
3D Gyroscope	Yes			
3D Accelerometer	Yes			
RAV (Recoil Activated Video)	Yes			
Electronic Compass	Yes			
Smooth Zoom	Yes			
Radar	Yes			
Reticles	Multiple Patterns & Color Options, User Custom reticles			
Reticle Editor	Yes			
Microphone	Yes			
MicroSD card	4 to 64 Gb (V30 class)			
USB, type C	Yes			
Mount	30 mm Standard Rings (included)			
Battery life (Li-ion)	Up to 14 hours			
Waterproof rating / IP rating	Weather resistant			
Operating Temperature	-28 °C to 48 °C			
Dimensions	337x56x54 mm	360x56x54 mm	362x76x56 mm	385x76x56 mm
Weight	0.85 kg	0.85 kg	0.95 kg	0.95 kg
Warranty	2 years			

*Specifications subject to change without notice.

OPTIONAL ACCESSORIES



**ATN X-TRAC 5
REMOTE CONTROL**



**ATN IR 850 SUPERNOVA
IR ILLUMINATOR**



**ATN WEAPON
BATTERY PACK**



**ATN LP QUICK
DETACH MOUNT**

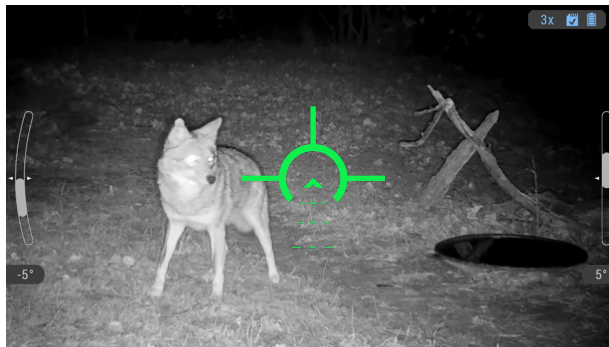


ULTRA SENSITIVE
NIGHT
SENSOR

EXCLUSIVE
PREDATOR
RETICLE

X-CELSIOR SERIES

NIGHT / DAY HUNTING RIFLE SCOPE



*scope view



ULTRA SENSITIVE NIGHT TIME SENSOR

Unlock the night with the Ultra Sensitive Night Time Sensor, delivering crystal-clear images even in the darkest environments, so you never miss a moment in low light.



1280 HIGH DEFINITION DISPLAY

See every detail with the 1280 High Definition Display, delivering sharp and vivid visuals that bring your target into perfect focus, day or night.



HD VIDEO RECORD

Capture every moment in stunning detail with built-in video recording. Easily save and share your adventures, ensuring you never miss a shot or memory.



DAY/NIGHT MODE

Hunt confidently 24/7 with easy day-to-night transitions, providing crystal-clear visuals no matter the time or lighting.



LONG-RANGE HIGH-POWER ILLUMINATOR (INCLUDED)

Illuminate your surroundings with the included long-range high-power illuminator, providing enhanced visibility in complete darkness, so you never miss a moment.



LIGHTWEIGHT

Stay agile and comfortable in the field with the X-Celsior's lightweight design, ensuring ease of movement without compromising on durability or performance.



MIL DOT RETICLE



ATN PREDATOR RETICLE

Dominate your hunt with the ATN Predator Reticle, a specialized reticle that combines simplicity with advanced targeting capabilities for quick, precise shots.

SPECIFICATIONS

	X-Celsior 3-9x	X-Celsior 5-15x
Item #	DGWSXC309NV	DGWSXC515NV
Magnification	3-9X	5-15x
Field of view	9°	5°
Sensor	2688x1944 pixels Ultra High Sensitivity	
Core	ATN X-Celsior Core	
Micro Display	1280 High Definition	
Eye relief	90 mm	
Video Record Resolution	1280 HD	
3D Gyroscope	Yes	
3D Accelerometer	Yes	
Day & Night Use	Yes	
Rangefinder	Stadiametric	
Reticles	Standard Reticles plus ATN Predator and Mil-Dot	
Miscro SD Card support	4 Gb to 64 Gb	
USB, type C	Charging Port	
Mount	30 mm Standard Rings (not included)	
IR Illuminator	Long Range High Power Illuminator (included)	
Battery type	Internal Lithium Ion Battery	
Battery endurance	≥ 10 hrs	
Battery charging	USB Type C	
Waterproof rating / IP rating	IP65	
Operating Temperature	-28°C to 48°C	
Dimensions (body only)	310x55x55 mm	330x55x55 mm
Weight	745 g	780 g
Warranty	3 years	
Box dimensions	381x152x76 mm	

*Specifications subject to change without notice.

OPTIONAL ACCESSORIES



ATN X-SOUND

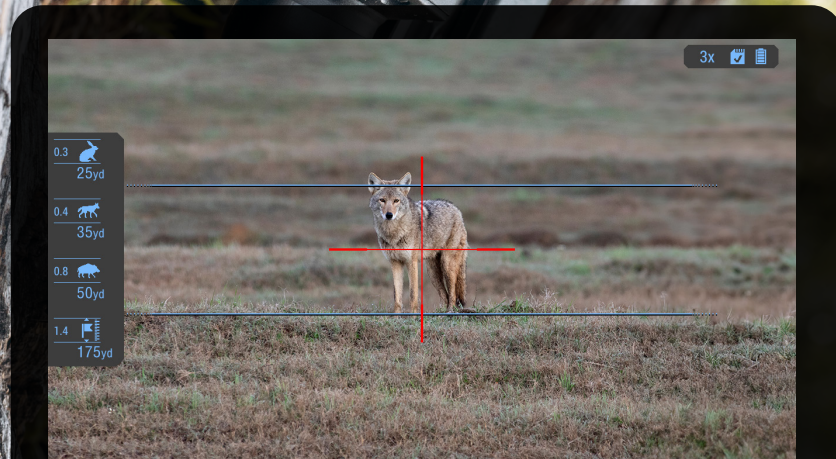


ATN WEAPON BATTERY PACK



LOW PROFILE QUICK DETACH HEAVY DUTY MOUNT

www.atneu.com e-mail: sales@atneu.com, sales@atnuk.com



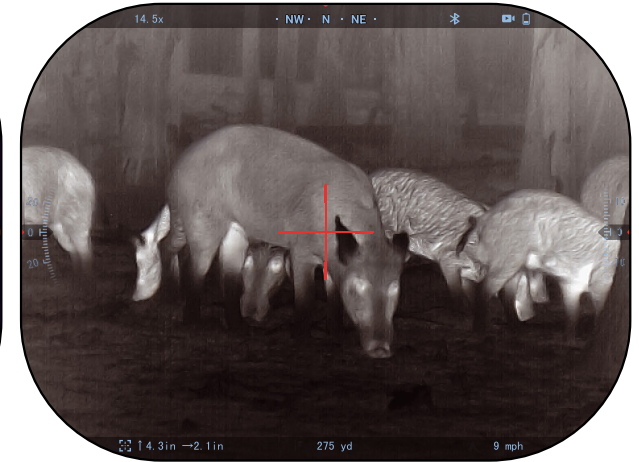
STADIAMETRIC RANGEFINDER

Achieve precise distance measurements with the Stadiametric Rangefinder, designed to give you accurate range data, making long-distance shots more reliable than ever.



MARS 5 XD / 5 XD LRF SERIES

1280X1024 5TH GENERATION THERMAL SCOPE



*scope view

XD 1280X1024 12 μ m THERMAL SENSOR

Offers unparalleled detail from a distance, with a million more pixels than competitors for superior image quality, day or night.

RETICLE CUSTOM RETICLE EDITOR

Design and share unique reticles using the ATN Custom Reticle Editor for personalized hunting experiences.

LRF BUILT-IN LASER RANGEFINDER (OPTIONAL)

Achieve pinpoint accuracy and ensure every shot counts, regardless of the distance to your target.

HD HD VIDEO RECORDING

Capture your hunting trips in high-definition, reliving each moment with clear, crisp video quality.

BC ADVANCED BALLISTIC CALCULATOR

Tailor each shot to environmental conditions, ensuring accuracy in any setting.

EH ENHANCED HUNTING FEATURES

Includes One Shot Zero, Profile Manager, Recoil Activated Video (RAV), and extended battery life, making it an ideal scope for any hunting scenario.



SPECIFICATIONS

Model	Mars 5 XD			Mars 5 XD LRF		
	Mars 5 XD 2-20x	Mars 5 XD 3-30x	Mars 5 XD 4-40x	Mars 5 XD LRF 2-20x	Mars 5 XD LRF 3-30x	Mars 5 XD LRF 4-40x
Item #	MS51250A	MS51275A	MS51210A	MS51250LRF	MS51275LRF	MS51210LRF
Laser Rangefinder	No			Yes		
Sensor	1280x1024 60 fps 12 µm					
Magnification	2-20×	3-30×	4-40×	2-20×	3-30×	4-40×
Field of view, degrees	17.6x13.2	11.8x8.8	8.8x6.6	17.6x13.2	11.8x8.8	8.8x6.6
Core	ATN Gen V Quad Core T					
Micro Display	OLED display 1024x768					
Eye relief	90 mm					
Video Record Resolution	Up to 1280x960 @ 60 fps					
Ballistic Calculator	Yes					
WiFi (Streaming, Gallery, & Controls)	iOS & Android					
Bluetooth	Yes					
3D Gyroscope	Yes					
3D Accelerometer	Yes					
RAV (Recoil Activated Video)	Yes					
Electronic Compass	Yes					
Smooth Zoom	Yes					
Radar	Yes					
Reticles	Multiple Patterns & Color Options, User Custom reticles					
Reticle Editor	Yes					
Microphone	Yes					
MicroSD card	4 to 64 Gb					
USB, type C	Yes					
Mount	30 mm Standard Rings (included)					
Battery life (Li-ion)	10 hrs					
Waterproof rating / IP rating	Weather resistant					
Human Detection Range, m	2150	3200	4000	2150	3200	4000
Human Recognition Range, m	860	1440	1800	860	1440	1800
Human Identification Range, m	480	610	720	480	610	720
Operating Temperature	-28 °C to 48 °C					
Dimensions	365x73x73 mm	395x73x73 mm	425x73x73 mm	365x96x73 mm	395x96x73 mm	425x96x73 mm
Weight	1.133 kg			1.203 kg		
Warranty	3 years					

*Specifications subject to change without notice

OPTIONAL ACCESSORIES



ATN X-SOUND



**ATN X-TRAC 5
REMOTE CONTROL**

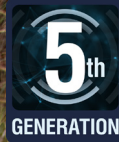


**ATN HP QUICK
DETACH MOUNT**



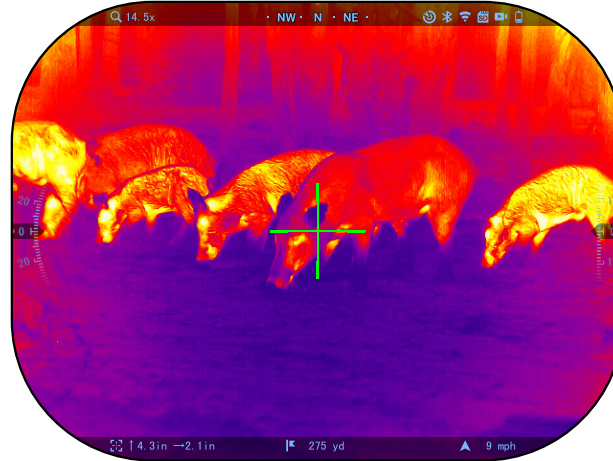
**ATN THERMAL
TARGETS**





MARS 5 / 5 LRF SERIES

SMART HD THERMAL RIFLE SCOPE



*scope view

NEXT GEN ULTRA SENSITIVE 12 μ m THERMAL SENSOR

Delivers richer colors and greater detail, enhancing target detection day or night.

BUILT-IN LASER RANGEFINDER (OPTIONAL)

Enables precise target ranging and accurate shooting over any distance.

ADVANCED BALLISTIC CALCULATOR

Provides precise shot data for your scope, ensuring accuracy and effectiveness.

CUSTOM RETICLE EDITOR

Design and share personalized reticles for a unique hunting experience.

HD VIDEO RECORDING

Capture your hunting adventures in high-definition, reliving each moment with crystal-clear video quality.

ADDITIONAL FEATURES FOR ENHANCED HUNTING

Includes One Shot Zero, Profile Manager, Recoil Activated Video (RAV), and extended battery life, making it an ideal scope for hunters.



SPECIFICATIONS

Model	Mars 5 320			Mars 5 LRF 320			Mars 5 640				Mars 5 LRF 640				
	Mars 5 320 3-12x	Mars 5 320 4-16x	Mars 5 320 5-20x	Mars 5 LRF 320 3-12x	Mars 5 LRF 320 4-16x	Mars 5 LRF 320 5-20x	Mars 5 640 2-16x	Mars 5 640 3-24x	Mars 5 640 4-32x	Mars 5 640 5-40x	Mars 5 LRF 640 2-16x	Mars 5 LRF 640 3-24x	Mars 5 LRF 640 4-32x	Mars 5 LRF 640 5-40x	
Item #	MS5319A	MS5325A	MS5335A	MS5319LRF	MS5325LRF	MS5325LRF	MS5625A	MS5635A	MS5650A	MS5675A	MS5625LRF	MS5635LRF	MS5650LRF	MS5675LRF	
Laser Rangefinder	No			Yes			No				Yes				
Sensor	320x240 60 fps 12 µm						640x480 60 fps 12 µm								
Magnification	3-12x	4-16x	5-20x	3-12x	4-16x	5-20x	2-16x	3-24x	4-32x	5-40x	2-16x	3-24x	4-32x	5-40x	
Field of view, degrees	11.6x8.7	8.8x6.6	6.3x4.7	11.6x8.7	8.8x6.6	6.3x4.7	17.6x13.2	12.6x9.4	8.8x6.6	5.9x4.4	17.6x13.2	12.6x9.4	8.8x6.6	5.9x4.4	
Core	ATN Gen V Quad Core T														
Micro Display	OLED display 1024x768														
Eye relief	90 mm														
Video Record Resolution	Up to 1280x960 @ 60 fps														
Ballistic Calculator	Yes														
WiFi (Streaming, Gallery, & Controls)	iOS & Android														
Bluetooth	Yes														
3D Gyroscope	Yes														
3D Accelerometer	Yes														
RAV (Recoil Activated Video)	Yes														
Electronic Compass	Yes														
Smooth Zoom	Yes														
Radar	Yes														
Reticles	Multiple Patterns & Color Options, User Custom reticles														
Reticle Editor	Yes														
Microphone	Yes														
MicroSD card	4 to 64 Gb														
USB, type C	Yes														
Mount	30 mm Standard Rings (included)														
Battery life (Li-ion)	10 hrs														
Waterproof rating / IP rating	Weather resistant														
Human Detection Range, m	750	960	1400	750	960	1400	1250	1600	2150	3300	1250	1600	2150	3300	
Human Recognition Range, m	335	432	630	335	432	630	560	720	960	1485	560	720	960	1485	
Human Identification Range, m	205	260	378	205	260	378	330	432	570	680	330	432	570	680	
Operating Temperature	-28 °C to 48 °C														
Dimensions	316x56x54 mm			341x76x56 mm			316x56x54 mm			330x56x54 mm		341x75x56 mm		355x76x56 mm	
Weight	0.88 kg			0.93 kg			0.88 kg			1.133 kg		0.93 kg		1.203 kg	
Warranty	3 years														

*Specifications subject to change without notice

OPTIONAL ACCESSORIES



**ATN X-TRAC 5
REMOTE CONTROL**



ATN X-SOUND



**ATN WEAPON
BATTERY PACK**

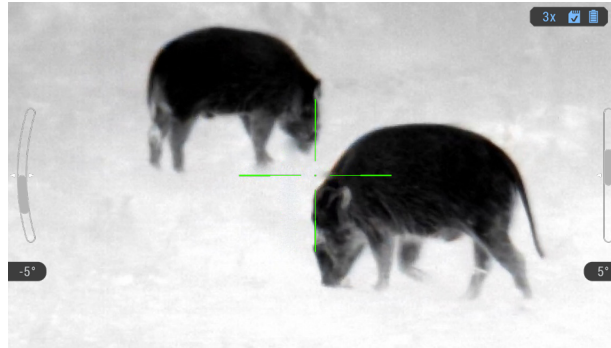


**ATN LP QUICK
DETACH MOUNT**



MARS LTV+ SERIES

ULTRA LIGHT THERMAL RIFLE SCOPE



*scope view



NEW OLED DISPLAY

Experience crisp and clear visuals with the state-of-the-art OLED display, ensuring enhanced clarity in all lighting conditions.

ADVANCED UI DESIGN

Offers versatile imaging options, allowing you to choose your preferred color palette for enhanced visibility and target distinction in various conditions.

VIDEO RECORD

Capture every moment with the integrated video recording feature, allowing you to document your hunts effortlessly.

STADIAMETRIC RANGEFINDER

Equipped with a Stadiametric Range-finder, this scope allows for precise distance measurement, ensuring accurate targeting every time.

LIGHTWEIGHT

Designed for long hunting trips, the ATN Mars LTV+ is incredibly light-weight, ensuring it won't weigh you down during extended use.

ERGONOMIC AND STYLISH DESIGN

Featuring a sleek and ergonomic design, the ATN Mars LTV+ is both functional and stylish, making it a pleasure to use.



SPECIFICATIONS

Item #	Mars LTV+ 256				Mars LTV+ 320			Mars LTV+ 640		
	MSLTV+212X	MSLTV+219X	MSLTV+225X	MSLTV+235X	MSLTV+319X	MSLTV+325X	MSLTV+335X	MSLTV+625X	MSLTV+635X	MSLTV+650X
Resolution	256x192 px / 12 µm				320x240 px / 12 µm			640x480 / 12 µm		
Magnification	1.5-4.5x	2-6x	3-9x	4-12x	3-9x	4-12x	5-15x	2-6x	3-9x	4-12x
Field of view	14.2°x10.7°	8.9°x6.7°	7.1°x5.4°	4.9°x3.7°	11.6°x8.7°	8.8°x6.6°	6.3°x4.7°	17.6°x13.2°	12.6°x9.4°	8.8°x6.6°
Display Resolution	OLED 1024x768 px									
Eye relief	90 mm									
Video Record Resolution	1024x768 px									
3D Accelerometer	Yes									
Color modes	White Hot/Black Hot/Color Modes									
Reticles	Multiple Patterns									
Micro SD card	4 to 64 GB									
USB, type C	Yes									
Mount	30 mm Standard Rings (not included)									
Internal Lithium Ion Battery	9 + hrs									
IP rating	Weather resistant									
Human Detection Range, m	515	825	1035	1500	715	910	1510	740	920	1670
Human Recognition Range, m	130	210	260	375	305	455	680	375	485	700
Human Identification Range, m	65	105	130	190	200	290	400	250	325	440
Dimensions	292 x 56 x 55 mm									
Weight	0,65 kg									
Warranty	3 years									

*Specifications subject to change without notice.

OPTIONAL ACCESSORIES



ATN X-SOUND



ATN WEAPON BATTERY PACK

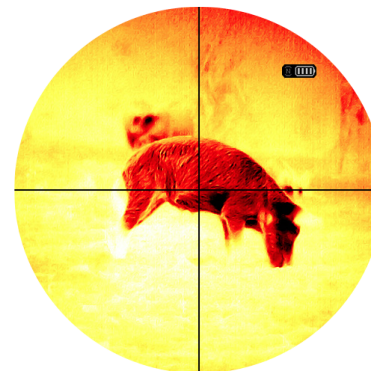
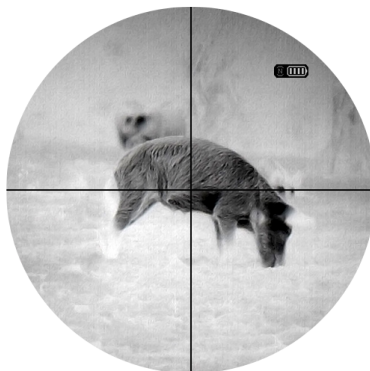


ATN QUICK DETACH MOUNT



TICO LTV SERIES

THERMAL MONOCULAR / CLIP-ON



TRANSFORMS DAYTIME SCOPE TO THERMAL IMAGING

Upgrades standard optics to thermal vision effortlessly.

HIGH-RESOLUTION THERMAL IMAGING

Delivers clear, detailed views in thermal mode, improving night-time hunting and observation.

MULTIPLE VIEWING MODES

Includes black hot, white hot, and color modes, allowing for adaptable viewing based on personal preference.

EASY-TO-MOUNT FEATURE

Enables capturing of hunting experiences across night vision, thermal, and combined modes.

LIGHTWEIGHT CONSTRUCTION

Designed for comfort during extended use without adding excess weight to your equipment.

ULTRA-LOW POWER CONSUMPTION

Offers up to 9 hours of operation, making it ideal for long hunting trips or observations.



SPECIFICATIONS

	ATN TICO LTV 256	ATN TICO LTV 320	ATN TICO LTV 640
Item #	TICOLTV225X	TICOLTV325X	TICOLTV650X
Sensor	256, 12µm	320, 12µm	640, 12µm
Resolution	256x192	320x240	640x480
Magnification	1-4x		
Field of view	7.0°x 5.4°	8.8° x 6.6°	8.8° x 6.6°
Display Resolution	OLED 1024x768		
Eye relief	Unlimited		
Color modes	10 palletes		
Monocular mode	Yes		
Digital zoom	2x, 4x		
Mount	Modular adapter or QDM		
Battery (Li-ion)	1 cell 18650, removable.		
Battery life	8 hours		
Waterproof rating / IP rating	Weather resistant		
Operating temperature	-20 °C to 48 °C		
Detection Range, m	835	1040	2080
Recognition Range, m	210	260	520
Identification Range, m	105	130	260
Dimensions	132x60x78 mm		152x60x78 mm
Weight	0,4 kg	0,4 kg	0,47 kg
Warranty	3 years		

*Specifications subject to change without notice.

**When choosing to use this option, the incorporation of your widgets are absent. Widgets would include reticle, time stamp, and logo that are added during video processing.

OPTIONAL ACCESSORIES



**RUSAN
ADAPTER**

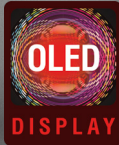


ATN X-SOUND



**ATN THERMAL
TARGETS**





BLAZEHUNTER SERIES

THERMAL MONOCULAR



*monocular view



PRO-GRADE IMAGE SENSOR

Equipped with a vanadium oxide un-cooled focal plane detector with NETD <18mK for exceptional thermal imaging and detection of even the smallest temperature differences for enhanced clarity and precision in all conditions.



VIDEO RECORD

Record and relive your thermal observations with high-quality video capture, perfect for enhancing your hunting and scouting trips.



MULTIPLE VIEWING MODES

Customize your view with six distinct color palettes—White Hot, Black Hot, High Red, Iron Red, Green Hot, and Sepia—tailored to your preferences for enhanced target detection and optimal visibility in any environment.



BUILT-IN WI-FI FOR EASY SHARING

Share the experience in real-time with up to 4 people simultaneously via the app, allowing you to instantly connect and share your view or photos, no matter where you are.



LARGE FULL-COLOR HIGH DEFINITION OLED DISPLAY

Featuring a large 0.41-inch OLED display with a 1440x1080 resolution, the BlazeHunter delivers twice the pixel density of other viewers, ensuring every detail is sharp and crystal clear, giving you the edge in any situation.



LIGHTWEIGHT

Compact and lightweight—under 0.8 lbs—BlazeHunter fits comfortably in your hand and is effortless to carry, making it perfect for extended use without fatigue.

ONE PRODUCT - ENDLESS POSSIBILITIES

LONG-LASTING BATTERY LIFE

BlazeHunter's replaceable battery design, complete with two rechargeable batteries and a charger, gives users up to 14 hours of uninterrupted operation—perfect for extended adventures or long hunts.

BlazeHunter
LRF 4-32x



Home defense

Gain the ultimate advantage to detect potential threats in the dark.



Hunting

Track your game with precision, in any light condition.



Outdoor adventures

Explore the outdoors with thermal imaging and discover nature in a whole new way.

BUILT-IN LRF Only for LRF models.



The BlazeHunter thermal monocular has a built-in Laser Range Finder for fast and precise distance measurement. Whether tracking wildlife or navigating rugged terrain, the LRF simplifies rangefinding, providing essential data without additional devices.

SPECIFICATIONS

	BlazeHunter 335	BlazeHunter 335 LRF	BlazeHunter 635	BlazeHunter 635 LRF	BlazeHunter 650 LRF
Item #	TIMNBLH335	TIMNBLH335LRF	TIMNBLH635	TIMNBLH635LRF	TIMNBLH650LRF
Sensor	384x288, 50 Hz, 12 μm, <18mK		640x512, 50 Hz, 12 μm, <18mK		
Lens	35 mm	35 mm	35 mm	35 mm	50 mm
Magnification	4-32x	4-32x	2.5-20x	2.5-20x	3.5-28x
Field of view	7.8 x 5.9	7.8 x 5.9	12.4 x 10	12.4 x 10	8.7 x 6.9
Display Resolution	OLED 1440x1080				
Eye relief	15 mm				
Color modes	White hot, Black hot, White hot + red, Green hot, Sepia, Ironbow				
Battery type	18650 rechargeable (qty 2 included)				
Battery life	14hrs (7hr per battery)				
Charging	Rechargeable, Charger included				
IP rating	IP67				
Detection Range	1800 m/y	1800 m/y	2000 m/y	2000 m/y	2600 m/y
LRF Range	N/A	1000 y	N/A	1000 y	1000 y
Operating Temperature	-30 °C to +50 °C / -22 °F to +122 °F				
Dimensions	5.98" × 1.67" × 2.93" / 152 mm × 42 mm × 74 mm				
Weight (without battery)	0.7 lb / 320 g	0.8 lb / 360 g	0.7 lb / 320 g	0.8 lb / 360 g	0.8 lb / 360 g
Warranty	3 years				

*Specifications subject to change without notice.

IR850 PRO LONG RANGE INFRA-RED ILLUMINATOR



ATN IR850 Pro an extremely powerful, long range 850 mW infrared illuminator for hunting and search and rescue use.

IR850 SUPERNOVA EXTREME RANGE INFRA-RED ILLUMINATOR



ATN IR850 Supernova; an extremely powerful, long range infra-red illuminator with adjustable mount, that is perfect for hunting and search and rescue use.

IR940 LONG RANGE INFRA-RED ILLUMINATOR



The IR940 IR illuminator provides a more covert experience when you want to stay hidden from your prey. Animals and people are not able to see the red glow when looking at the illuminator, even at the light source.

EXTENDED LIFE BATTERY KIT 10,000 mAh BATTERY PACK



Don't let yourself be stuck without a functioning unit, because you didn't bring extra batteries to power your device. ATN Extended Life Battery kit can support your binoculars or monoculars for up to 15 hrs. You can use your devices longer and save money and the environment in the process. Enjoy your activities all day long — whether scouting, camping, bird watching, or surveillance. Designed to be used with the ATN line of Smart HD Optics: BinoX 4K and BinoX 4T.

X-SOUND HEARING PROTECTOR



ATN X-Sound reduces harmful loud noise down to safe levels below 82 dB and enhances clarity of surrounding low level sounds such as conversations and announcements.

The ergonomic volume control knob allows for total adjustment of the two built-in omni directional microphones, while built-in wireless capability enables hands-free calling and music enjoyment. Or, connect a playing device via the 3.5 mm audio jack.

POWER WEAPON KIT 20,000 mAh BATTERY PACK



The ATN Extended Power Kit gives you plenty of juice whenever and wherever you need it. Up to 20 hrs of continuous use. Easy to recharge and can power other devices.

Designed to be used with the ATN line of Smart HD Optics: X-Sight 4K, Mars 4, X-Sight 5, Mars 5, Mars LTV.

HIGH PROFILE QUICK DETACH HEAVY DUTY MOUNT



The High Profile Quick Detach Mount (HPQDM) is designed specifically to be used with the X-Sight 4K, Mars 4 and Mars 5 640/XD Series of scopes. The HPQDM allows you to quickly switch your scope between rifles; allowing you to take full advantage of the 6 different profiles you can utilize in your Smart HD scope. Simple to install and use, the quick detach mount provides a way for you to swap weapons easily, all while retaining zero.

LOW PROFILE QUICK DETACH HEAVY DUTY MOUNT



The Low Profile Quick Detach Mount (LPQDM) is designed specifically to be used with the X-Sight 5, X-Sight LTV, Mars LT, Mars LTV and Mars 5 640 Series of scopes. The LPQDM allows you to quickly switch your scope between rifles; allowing you to take full advantage of the 6 different profiles you can utilize in your Smart HD scope. Simple to install and use, the quick detach mount provides a way for you to swap weapons easily, all while retaining zero.

QUICK DETACH MOUNT



The ATN Quick Detach Mount is a great addition for your new X-Sight 4K or Mars 4. Take advantage of the profile manager of your scope, move it from platform to platform and still retain zero.

TACTICAL CARRY CASE



The ATN Tactical Carry Case is a great addition to protect your investment. These carry cases are made out of high quality material with molle webbing and attachments to connect to your loadout gear or compatible backpack, chest rig or harness. Our tactical bags are perfect for the ATN OTS XLT and OTS LT models. Keep your tactical gear protected while out and about in the field.

DELUXE BINOCULARS BAG



The ATN Deluxe Binoculars Bag is a comfortable and ergonomic bag with plenty of storage space for your BinoX 4K/4T and or OTS LT/4T units. Plus have easy access to your device and or needed accessories while in the field. Plenty of pockets and mesh webbing, for cables, batteries, power banks, auxiliary illuminators or cell phone.

THERMAL TARGETS



The ATN Thermal Targets are a great and easy way to Zero in your Thermal Scope, eliminating the frustration of finding a hot or cold target. It uses special material with an included heat source to give you a thermal signature that is easily picked up by your thermal scope. Package includes a set of 10 thermal targets.

X-TRAC 5



Use the X-TRAC 5 to connect to your 5th generation products and have the ultimate control over your device. Adjust settings and activate functions.



ATN Europe LTD

1588 Sofia Bulgaria ul. "Okolovrasten pat" 456B
Inter Logistic Park Office
Phone: +359 32570140
support@atneu.com • sales@atneu.com • dealers@atneu.com

ATN Europe LTD (Registered in UK)

09755904, 1 & 2 Skylon Place, Hursey Rd Hereford HR2 6NX
Phone: +44 2081451986 UK International Inquiries
sales@atnuk.com • support@atnuk.com

www.atneu.com